



GARTON JONES

KeyBridge Tower, 1 Exchange Gardens
London SW8

GARTONJONES.COM



KeyBridge Tower, 1 Exchange Gardens London, SW8

GARTON JONES.COM

9 Albert
Embankment
London
SE1 7SP

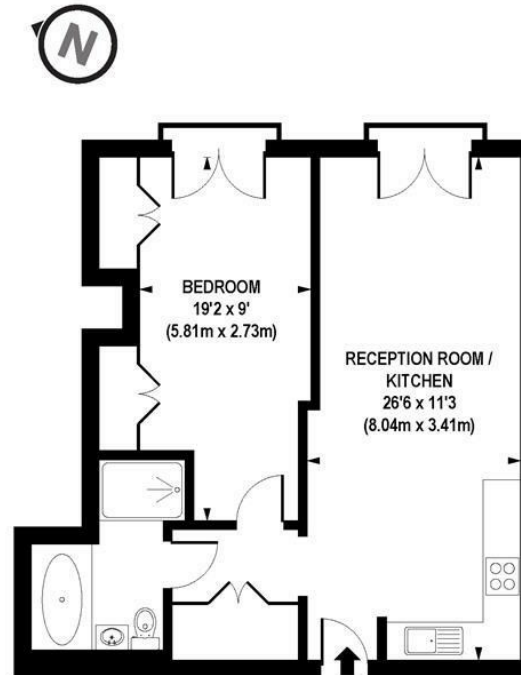
Lettings:
+44 (0) 20 7735 1888
nineelms@gartonjones.com
www.gartonjones.com

£577 Per Week

A larger than average one bedroom apartment situated on the 16th floor. The property is finished immaculately with floor to ceiling windows in all rooms framing spectacular views across London. Comprising an open plan reception room with smart integrated kitchen, excellent storage including large built-in wardrobes in the bedroom and modern bathroom. Residents enjoy a 24-hour concierge service, state of the art gymnasium, 15 metre swimming pool and access to the Keybridge Club Lounge. You will be located close to the huge Nine Elms Sainsbury's superstore, within easy reach of many other shops and local restaurants as well as the transport links of Vauxhall including rail, tube, bus, taxi and river boat services.

- 592. sq. ft. (55.sq.m)
- Open Plan Reception Room
- One Bedroom Apartment
- Luxury Bathroom
- Smart Integrated Kitchen
- Unfurnished
- 24 Hour Concierge
- Gymnasium & Swimming Pool
- Close to shops & restaurants
- Available 15th January 2022





APPROX. GROSS INTERNAL FLOOR AREA 592 sq. ft / 55.04 sq. m

Floorplan is for illustrative purposes only and is not to scale.
Every attempt has been made to ensure the accuracy of the floorplan shown, however all measurements,
fixtures, fittings and data shown are an approximate interpretation for illustrative purposes only.
Liability for errors, omissions or mis-statement through negligence or otherwise is hereby excluded.

CP CREATIVE
PROPERTY MARKETING

